

Historic, Archive Document

Do not assume content reflects current scientific knowledge, policies, or practices.



LIBRARY
RECEIVED
★ FEB 1 1918

INDEXED

9.41

Knight's Guide **TO SMALL FRUITS**



1310

Strawberries
Raspberries, Blackberries
Currants, Grapes, etc.

DAVID KNIGHT & SON
SAWYER, MICHIGAN

HOW WE DO BUSINESS

Post Office, Express Office and Telegraph Office at Sawyer, Michigan. Bell Telephone in our office.

TERMS.—Cash with order, or part cash when order is sent, the balance to be sent before shipment.

REMITTANCES.—Send money by Check, Draft, Post-Office Money Order, Express Money Order, or Registered Mail. Currency sent in a letter without registering is at sender's risk.

HOW TO ORDER.—Use the order sheet found in this catalog, being sure to write your name and address plainly, and fill out all blanks carefully with reference to where you want your plants shipped, whether you want them sent by express, freight, or mail, and at what time.

HOW WE SHIP.—Express is much the safer way and, as there is a general special rate applied to nursery stock, the cost is not exorbitant. We guarantee express shipments to reach destination in good condition. Raspberry, blackberry, and other heavy plants can be shipped safely by freight early in the season and considerable transportation charges saved thereby. However, all freight shipments go at consignee's risk.

PARCELS POST.—Plants may be sent by mail at a reasonable expense. For instance, 100 strawberry plants can be sent anywhere in the 1st zone for about 7 cts.; 2nd zone, 7 cts.; 3rd zone, 10 cts.; 4th zone, 15 cts.; 5th zone, 20 cts.; 6th zone, 25 cts.; 7th zone, 31 cts.; 8th zone, 36 cts. We cannot give you a very close estimate on raspberry and blackberry plants as they vary so much in weight. Plants may be sent C. O. D., both for cost of plants and postage. However, this costs you more for return of money.

ORDER EARLY.—Do not delay placing your orders until you are ready to plant. The earlier orders are placed, the better it is for you and for us. All orders are booked in rotation as received, therefore it is to your advantage to get your order placed early before varieties you wish are gone.

GUARANTEE.—We are careful to label, count, and pack our plants correctly, and we assume the responsibility of replacing, free of charge, any stock sent by us that proves untrue to label or short in count; however, it is understood between the purchaser and ourselves that we are not to be held liable for any greater sum than that paid for such stock as may prove untrue to label.

COMPLAINTS.—Complaints, if any, must be made within ten days after receipt of stock.

SHIPPING SEASON.—Commences about March 15 and continues until about May 15.

American National Bank

Benton Harbor Michigan

December 1, 1913

To whom it may Concern..

We take pleasure in informing you that we have known and transacted business with David Knight & Son since the origin of this Bank.

We know they do a large nursery business and that all promises or statements made by them may be absolutely depended upon

Respectfully yours,

The American National Bank,

By *L. R. Taft* Cashier

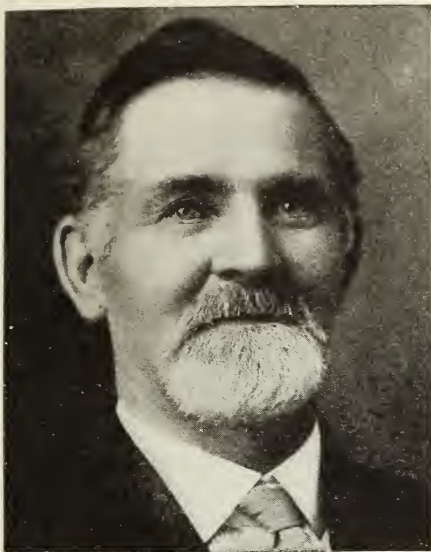
CERTIFICATE OF NURSERY INSPECTION No. 1972

This is to certify that I have examined the nursery stock of David Knight & Son, Sawyer, Mich., and find it apparently free from dangerous insects and dangerously contagious tree and plant diseases.

This certificate to be void after July 31, 1919.

L. R. TAFT,

State Inspector of Nurseries and Orchards,
Agricultural College, Michigan, October 3, 1918.



David Knight



A. R. Knight

A. D. 1919



THE world is again at peace. The powers of sin and destruction have been vanquished and never more will be able to stage such a war of frightfulness and destruction as we have witnessed for the past four years. And our own United States was the dominating factor in bringing about this peace. The whole world realizes and glorifies in that fact. But our obligation to mankind is not ended. The world is no longer at war, but war's awful devastation has not been wiped out, nor will it be for years to come. The millions of fertile acres which, before the war, were producing foodstuffs now lie bleak and unproductive, and the millions of people who depended upon those acres for sustenance now look toward America for help. And America will feed them. This great nation will, for many years, be the chief storehouse for the world. This means that food stuffs of every description must be grown in larger quantities than ever before. It means that we will have to grow two bushels of wheat, two bales of cotton, and two crates of berries where before we grew one. But, as supply and demand regulate prices, it also means that we, who are so fortunate as to be agriculturists, will reap the reward of our labor. It is the pleasure and duty, then, of all of us who are in the fruit business to increase our acreage and double our efforts to achieve the very maximum of production.

Our nearly thirty-five years in the plant business is your assurance that you are taking the first step in the right direction by placing your order with us. You undoubtedly have a neighbor who has used our stock and will be glad to tell you of its superiority, for we have thousands of satisfied customers all over the United States who are always glad to speak a good word for us and our plants. In fact our large business has been mainly built up by the word being passed along from our customers to their friends that "Knight's plants are good plants," as we have done no extensive newspaper advertising, and have thus been able to sell the best plants obtainable at a price that our customers could afford to pay.

However the continued advance in the cost of labor, cultivation, fertilizer, packages and, in fact, everything that enters into our business, has forced us to advance our prices over those of previous years. But the price of fruit has advanced in even a greater proportion, so no one should curtail their orders, for the original cost of plants is very small as compared to the revenue derived from them.

Our supply of plants is larger this year than last but still not up to normal. This is particularly true of the Everbearers which set plants very sparingly. We are also short of some of the varieties of cane plants, but the quality of all of our stock is right up to the Knight standard, and if you will place your order early you will be assured of getting as fine plants as our more than thirty years of experience has taught us how to grow.

Something About Us and Our Plants



This is the kind of roots KNIGHT'S STRAWBERRY PLANTS develop.

will be best served by using KNIGHT'S plants.

In the spring of 1885 our first catalog was mailed. It was simply a folder describing just one variety, the old Wilson's Albany strawberry. Only two hundred copies were sent out and, naturally, our business was very small. However, every year since, Knight's catalog, in gradually larger size and larger quantity has been mailed to a continually enlarging number of customers, until at present we ship millions of plants every season to patrons in nearly every State in the Union.

Our business having grown from practically nothing in 1885 to one of the largest of its kind in the country today is an assurance that we know the plant business well and that we have always had the interest of our customers at heart for, were this not true, our career as nurserymen would have been ended years ago. It is your assurance that an order placed with us will bring you good, strong, true-to-name plants, the kind that will surely produce a productive fruiting patch for you.

Glowing, over-drawn descriptions, catch phrases, and possibly lower prices may attract you, but why take a chance when KNIGHT'S fruit plants have made so much money for thousands of fruit growers throughout the whole country and will just as surely be profitable for you.

The plants which we use in setting our new patches are those selected with great care so that no weak or imperfect plants will be the mother-plants to the stock sent our customers.

Our strawberry patches are set in the spring, make their growth of runners and new plants during the summer and fall, and the following spring the whole row is dug. The mother-plant and the smaller and weaker plants are thrown away and only the selected best ones sent out to the trade. In this manner you not only get selected stock, but the plants are produced from mother-plants that have never borne fruit.

A saving of 50 cts. or \$1.00 per thousand on small fruit plants is mighty poor economy if, by doing so, you sacrifice quality. The cost of enough plants to set an acre of berries is very small when compared to the expense of getting your land in shape and caring for the patch until it produces fruit. It is therefore most essential to get the very best plants obtainable, regardless of cost, for by not doing so you stand a good chance of not only losing the initial cost of the plants but also your labor for a year and the use of your land for that length of time.

You naturally ask "Who has the best plants, I receive fifteen or twenty catalogs every year and they all claim their stock is superior, so how am I to know where to buy?" Well, the answer isn't easy, but we want to tell you a few reasons why we believe your interests



This is the root system that makes KNIGHT'S SMALL-FRUIT PLANTS produce big crops.

KNIGHT'S PLANTS SPELL SUCCESS

Indiana, April 29, 1918

Dear Sirs:—Enclosed please find order for plants. I do not question the quality of your plants as my father ordered from you several years ago. I was at home and helped receive and set out several thousand of them which were a success.

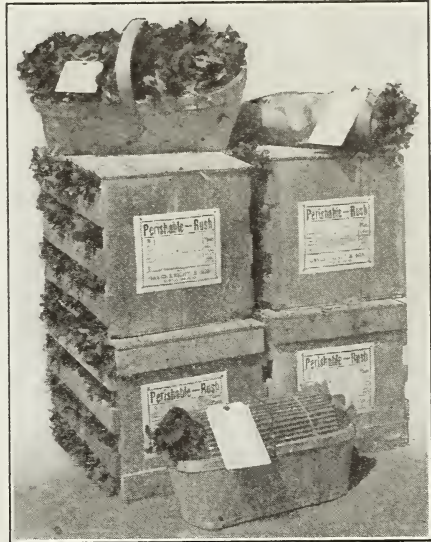
Yours truly,

GRACE ROBERTSON

Our black raspberry plants are produced by tipping down the canes of young patches only, and the enormous root system is a surprise and delight to all who use our stock. The illustration at bottom of opposite page is a photograph of one of our bunches of black caps. It was not selected because it was better than the average of our plants. Also note the strawberry plants at the top of opposite page. Such fine fibrous plants cannot help but grow if properly packed so as to reach you in good condition and our many years experience has taught us how to pack stock so it will arrive in the very best state of preservation, regardless of the distance. The illustration on this page shows how some of our plants are packed.

Only the very best selected plants of strawberries, raspberries, blackberries and other small fruits are packed and shipped from our nursery and, we repeat, you cannot afford to buy plants of any firm or at any price, that have not been grown and selected with as much care as we exercise here at Sawyer.

That it pays to grow small fruits is an established fact, but if you wish to get the most for your labor you should be sure that the plants you use are well grown, strongly rooted, and true to name. You cannot afford to set plants of inferior quality no matter how cheap you can get them. The best is none too good and when you pay for plants you are entitled to good stock and should have it. If your order is placed with us you will receive the same kind of stock that the large growers all over the country have been using for years and depend upon. Stock that has made big money for others and will just as surely make big money for you.



Good packing is very essential. All of our plants are packed in bundles, baskets and crates, and are sure to reach you in good condition.

ORDER EARLY

During the winter months you have plenty of time to plan the size patch of berries you wish to set and decide on the varieties to use. And as soon as this Catalog is received, it will be much to your advantage, and to ours, if you will make up your order at once and send it to us, for all orders are filled in rotation as received and if you wait until late in the season you will have to take your chance with hundreds of others and may not receive your plants just when you want them. Another thing. Plants, especially certain varieties, are a short crop this season, and it is practically certain that we will be sold out of some sorts before the season is far advanced. These may be just the varieties you want, so insure yourself against disappointment by ordering early. Don't overlook the Premium Offer for Early Orders on the Back Cover of this Catalog.



One of our strawberry patches. Note the strong growth. We have millions of plants like these

Cultural Directions.

STRAWBERRIES.

Strawberries will do well in any soil with exception of very light dry sand and clay that has poor drainage. As moisture is very essential to large crops of fruit, a springy land that is well drained is the ideal soil, but on other kinds of soil the moisture can be conserved by cultivation and mulching.

Preparing the Land.

Any soil on which has been previously grown such crops as potatoes, corn, onions, cabbage, etc., is well adapted for strawberries. This is because the land has been well cultivated during most of the growing season and because manure or fertilizer has been used, all of which benefits the strawberry crop following. Leguminous crops such as clover, vetch, etc., are also excellent crops to precede strawberries, as they add nitrogen and humus to the land. Do not select a piece of land for your strawberry patch that is in sod for it is very liable to be infested with the white grub, which will cut off the young strawberry plants when set. Barnyard manure is the very best fertilizer for strawberries. It is better to apply it in the fall before planting in the spring, but if this has not been attended to, then very good results can be obtained by spreading it on the land as early in the spring as possible and plowing under. After the land is plowed the harrow and disc should be freely used until the soil is mellow and free from clods. In some cases it is advisable to roll the land where it is lumpy and heavy, this also makes the soil firm and helps to conserve moisture. Don't spare any work to put your land in the very best possible condition before planting, for it will save you much cultivation and hard work later on, and the results will more than repay you.

Time to Plant.

In the South most of the planting is done in the fall or early winter, but in the Central and Northern states early spring is much the better time, for if plants are set in the fall there is a very short growing season before the ground becomes frozen and the plants, not having become well rooted, are very liable to become damaged during the winter. Get at this work of planting just as soon as you can in the spring. Order your plants shipped from the 1st to 20th of April and if your ground is not in condition when they arrive, heal them in for a few days.

Systems of Planting.

There are several systems of growing strawberries and they all adapt themselves to various sections and conditions. Here in Michigan where every farmer grows a large acreage for commercial purposes, the matted row system is used exclusively, but if you only have a limited amount of space and if you wish to supply a market that will pay a fancy price for fancy fruit, then use one of the other systems described below.

The Hill System.

With this system the rows should be 30 inches apart and the plants 15 inches apart in the row, thus using about 14,000 plants to the acre. Keep all runners removed. This causes the individual plants to become very large as there is no vitality being used to produce runners and new plants. The ground should be marked off in check rows so that the cultivation one way can be done with a horse and the other way with a hand cultivator. This system requires plenty of manure and fertilizer, also constant attention to cultivation and runner cutting, but the large plants thus established have a sufficient fruiting surface to produce an enormous crop, and berries grown by the hill system are of unusually good size, quality and appearance.

Twin-Hill System.

The twin-hill system is very popular where only a limited amount of ground is available, as it utilizes space more economically than the hill system. Mark out two rows 16 inches apart, then leave a space of 30 inches and make two more rows 16 inches apart, and so on. In this way you will have twin rows 16 inches apart and a 30 inch space between each set of twin rows. Set the plants 15 inches apart in the row and have them in check rows so that the 30 inch space can be cultivated with a horse and the 16 inch space and cross cultivation can be done by hand. Keep all runners removed as in the hill system. About 18,200 plants to the acre will be required.

Single Hedgerow.

This is a popular and intensive system of strawberry growing. The plants are set in rows three feet apart, and the plants 2 feet apart in the row. Set in check rows so as to allow cross cultivation. Let each plant produce two runners, and allow only one plant to be formed from each runner, this plant to be placed in direct line with the original row. Clip all other runners and plants as fast as they appear. About 7300 plants are required to set an acre by this system.

Triple Hedgerow.

This is much the same as the single hedge with exception that 6 runners and plants are allowed to form. Two of these plants are layered in direct line with the original row while two of them are placed on either side of the original row but in line with it, thus when the plants are established there will be three rows instead of one and consequently a larger fruiting surface.

The Matted Row.

This is the most common system of strawberry growing and is very popular where berries are grown in a commercial way on a large scale, as less labor is required in setting and caring for the patch and the quantity of berries produced

is usually larger than by the other systems. The rows are marked off $3\frac{1}{2}$ feet apart and the plants set from 18 to 20 inches apart in the row. Let all the runners and plants form that wish to, but when hoeing and cultivating you should keep the rows from 18 to 24 inches in width. The only disadvantage with this system is that sometimes plants set too thickly which results in producing small fruit, but this can be overcome by thinning out some of the plants. There is less work required with the matted row than any other system and, where the rows are kept thinned and not allowed to get too wide, they will produce more fruit and of practically as good size and quality as though grown by the hill system.

Setting Plants.

Your ground should be worked up mellow and free from clods just before planting. After this is done, mark off the ground according to the system of planting you are going to use. A flat dibble or trowel should be used for making the holes, although when two people are working together the spade is a good tool for this purpose as one can go ahead and make holes with the spade while the other follows and places the plants in the holes and firms them in. After pushing the dibble or spade in the ground it should be worked forward and backward a little so as to make the hole large enough for the roots to be straightened out—fanshape—before the dirt is firmed around them. It is very important that the crown of the plant is just at the surface of the ground—not above or below. The roots of the plants should be wet just before setting and it is also a good plan to trim off the roots by about one third.

Cultivation.

Cultivation should commence as soon as the plants are set and continue every ten days or two weeks all during the growing season. This is done not only to destroy weeds but to conserve moisture. After a rain the soil packs down and a baked surface is soon formed which breaks up in large clods, so it is best to get in with the cultivator just as soon after a rain as possible. When a season is severely dry, the cultivator constantly going will form a dust mulch, thus preventing the evaporating of such moisture as remains in the ground and this, in many instances, saves patches that otherwise would be ruined. Proper cultivation has a wonderful effect upon plant growth and anyone who does not attend to this most important part of the work cannot expect to get maximum results.

Care of Patch After Fruiting.

After harvesting the first crop of fruit, mow off the foliage with a mower or scythe. This cleans out the dead leaves but does not hurt the crowns. After it is well dried out rake this rubbish to the space between the rows and burn it. In this way you not only clean your patch and make it easier to work but also destroy all insects and plant diseases. After getting rid of the foliage it is a good plan to plow a furrow on each side of the row, cutting the bed to about eight or twelve inches, after this is done throw manure into the furrows and level up with a cultivator. Now go through the patch with a hoe and cut out the old plants and some of the new ones, if the rows are too thick. In the single hedge row system chop out the old plants and leave young ones in the rows the same distance as originally planted. For the triple hedge plow under the outside rows, remove the old plants from the original rows and proceed to make a new triple hedge with the new plants.

Mulching.

In some sections of the North where a heavy fall of snow can be depended upon, patches of strawberries are carried through the winter successfully with no other covering, but as a general rule, it is a good plan to mulch. This should be done after the first hard freeze in the fall. Straw, marsh hay or swamp grass make good mulch, applying about one inch deep over the row and more between the rows. Water from rain and melting snow causes the mulch to pack down tight over the vines by spring so that the plants are not able to grow through, it is necessary, then, as soon as growth starts in the early spring, to separate the straw directly over the rows so that the plants can grow through. Leave mulch between the rows until after the fruiting season as it tends to keep the ground moist, discourages weed growth and keeps the berries clean at picking time.



This Pennsylvania strawberry patch was set with \$30.00 worth of KNIGHT'S PLANTS—
 Within one year it had produced \$350.00 for the owner—Another reason
 why you should use KNIGHT'S PLANTS

Perfect and Imperfect Varieties.

In describing the different varieties of strawberries you will find we have marked all of them either "Per" or "Imp."—Just a word in explanation of this: The blossoms of a perfect flowering variety contain both anthers and pistils, or male and female parts, and will thus produce crops of berries without being pollenized by some other variety. But the imperfect flowering sorts have only pistils and no anthers, thus they do not produce pollen of their own and this has to be supplied by some perfect flowering variety. It is therefore necessary, when using the "Imp" varieties to set every other, or every second or third row, with "Per" varieties in order to assure a crop of properly formed fruit. Some of our best varieties have imperfect bloom so do not be afraid to order them on that account, only be sure to include enough of the perfect blooming sorts so that the pollenization will be complete.

Healing-in Plants.

Probably the cause of as much failure as any one thing is the improper handling of plants from the time they are received until planted. Very seldom the shipment of plants arrives on the morning of the day you had planned to set them, and when they have to be held over until you are ready to plant them then, by all means, heal them in. First dig a V-shaped trench, in a shady place, large enough to accommodate the roots without curling them up. Cut the strings that bind the bundles and set the plants in the trench. Draw the earth up over the roots and to the crown, packing it down firmly. Don't neglect to give the plants a liberal wetting.

EVERYONE WANTS KNIGHT'S PLANTS

Illinois, April 22, 1918.

Dear Sirs:—Since everyone here has seen our strawberry plants they are wanting me to order them some, so I am doing so. Enclosed please order as follows:

Yours respectfully,

NOLA WRIGHT.

PLANTS ARRIVED IN FINE SHAPE

Ohio, April 10, 1918.

Gentlemen:—I have received my berry plants today and they are in fine shape. They are very nice plants and I just hope I will have good weather for planting them.

Yours truly,

FRANK GRABER

EVERBEARING STRAWBERRIES—Price List Page 14.

Ever bearing Strawberries are one of the most valuable additions to fruit growing that has ever been known. There is absolutely no doubt as to their value and, although thousands and thousands of ever bearing plants are being set every spring, it will be a good many years before the price of fresh strawberries in the fall is lower than at the present time for the demand is enormous and people are willing to pay fancy prices for strawberries in what they consider, out of season. So if you have never grown ever bearing strawberries, get a start of them this year for they are indispensable to the home garden and they open up an entirely new and profitable field to the commercial grower. But by all means place your order for plants early, for there has never been a season when we have had enough plants to supply all orders, even with a full crop. This year the plants set so sparingly that we haven't a half crop, so the only safe way to get your order booked is to mail it in as soon as this catalog is received.



Progressive

bearers and Superb second. This has not been our experience, although Progressive is certainly an exceptionally worthy sort and a close second to Superb. The berries are of fair size, rich deep crimson in color, nearly round and very glossy. The plants are strong growers having an abundance of large healthy leaves. This variety, like Superb, will produce a bumper crop the second spring planted after bearing a good crop the fall before. We set a large enough acreage of Progressive last spring to supply all of our customers had they made plants freely but, like Superb, they did not do so and we are therefore short of them again this year. If you are planning an Everbearing strawberry patch—and you should have one—then take our advice and place your order for plants immediately.

✓ **SUPERB.** Per. On our grounds Superb is still the leader of all fall varieties. Not as to quantity of fruit produced, but as to size, handsome appearance, and quality. The berries grow very regular in shape and ripen all over at once. They are very large and attractive, having a dark red glossy color that is very attractive. In our opinion there has never been a variety introduced, either spring or fall bearing, that has so much vitality and such fruit producing qualities as Superb. It seems almost unbelievable that, after producing a crop of fruit the first fall after being planted, they will also produce as large a crop the following spring as any of the spring sorts; still this is absolutely the fact and, besides, they will produce another crop the following fall. The plants are strong, healthy growers and make runners freely, however, the most fruit can be had by planting for hill culture and keeping runners removed. We have a large acreage of Superb this year but, as stated above, they set only a few plants and as the demand is so very heavy we will be sold out early.

✓ **PROGRESSIVE.**

Per. A good many growers rate Progressive as the best of the ever

N. Y. CUSTOMER PLEASSED

New York, April 24, 1918

Dear Sirs:—The plants came today. They were in good shape and I am pleased with them. Thank you.

Yours truly,

ARTHUR W. MORRIS

STANDARD SPRING VARIETIES.**EXTRA EARLY—Price List Page 14.****Charles I.**

Per. This has proven one of the best and most profitable of any of the extra-early varieties grown in this section of the country. It commences bearing earlier than the old Mitchell's Early and is much superior to that variety in productiveness, firmness, and quality. The berries are of good size, good color, and good quality, and ripen at a time when they can be sold at a good price. If you are in need of a profitable extra-early variety, be sure to include Charles I in your order.



Charles First

Campbell's Early.

Per. We have not fruited this variety as yet but the many indorsements from some of the best growers in the country, lead us to believe it is all that is claimed of it.

There are few really good extra early varieties, and for that reason you should give Campbell's Early a trial for it may prove just the variety you have been looking for.

Campbell's Early is described as being the "greatest of all strawberries," earlier than Michael's Early, but having a size, color and quality equal to the best of the mid-season or late varieties. In fact, it is said to be as large as Gandy but with the added advantage of being more productive and the berries ripen all over with no green tips and are never knotty or ill-shaped. It is not an excessive plant maker but forms a good fruiting row and the plants are large and healthy with a light green upright foliage which amply protects the enormous crop of large, beautiful rich red berries.

We have only a limited supply of plants this season so would advise placing your order early.

ANOTHER LARGE NURSERY FIRM PLEASED

New York, April 13, 1913

Gentlemen:—We found your plants very satisfactory and if you can ship immediately upon receipt of this communication would like the following:

Very truly yours, CHASE BROS. CO.

KNIGHT'S PLANTS GIVE BEST SATISFACTION

Iowa, April 26, 1913

Dear Sirs:—I got my plants all right in fine shape. Your plants give the best satisfaction of any.

Yours truly, JAMES M. FRY

RASPBERRY PLANTS PLEASE CUSTOMER

Michigan, April 18, 1913

Dear Sirs:—Enclosed please find order. We were very well pleased with the Kansas and Plum Farmer raspberry plants we got from you a few years ago.

Respectfully, F. FROELICK

MEDIUM EARLY VARIETIES—Price List Page 14.**Senator Dunlap**

and has a sprightly, delicious flavor.

This variety is grown largely as a commercial berry. Two hundred bushels per acre is not an uncommon yield. The demand for Dunlaps is very large, and the supply this season is limited so it is absolutely necessary to order early.

✓ **Bederwood.** Per. This is one of our best standard

Berries for market. It is early, a strong yielder, and continues a long time in bearing. The fruit is of good size and as firm as the Crescent, but it is liable to rust and should not be planted on wet soil. Does better North than South.

✓ **Haverland.** Imp. Exceedingly productive. Fruit

large and fine. One of the most popular of the well-tested varieties. It will stand more frost than most any other variety, often bearing large crops when others are killed. We can always depend on a large crop. Few varieties will produce more fruit per acre or sell for more money. The demand for plants is always great.

✓ **Warfield.** Imp. The Warfield is a great plant-maker, cov-

ering the soil, with only fair treatment. The berries are deep glossy red and are very attractive in market, when well grown. It is red to the center, very firm, and much sought for by canners. It has the record of producing immense crops of berries, but to do its best must have a rich, moist soil, good culture, and the plants must be kept thinned somewhat in the row. Warfield is an excellent market berry.

✓ **Senator Dunlap.** Per. In all localities where

it has been planted we hear nothing but praise for the Senator Dunlap. It sends out many runners and should have plenty of room. The plant is perfectly healthy and an enormous bearer. It commences to ripen soon after the earliest and continues until near the close of the season. The fruit is large and conical in form. The color is a deep, rich red, the flesh is also red,

MID-SEASON VARIETIES—Price List Page 14.

This is Mr. Nord's patch of Gibson. His net profits were \$615 per acre. How would you like to pull down money like that?

GIBSON—The Best of All Spring Varieties.✓ **GIBSON.**—Per.

Without doubt the biggest money-making Strawberry grown. We have received dozens and dozens of letters from those who grow Gibson and we hear nothing but praise for it. It will grow almost anywhere and will thrive in poor soil better than any other variety we know of. The fruit is large, well-formed, juicy, and delicious. From the outside to the heart the fruit is a clear red. Many

Strawberries are large at first, but decrease in size toward the end of the season. With Gibson the exact opposite is true for it holds its size even to the last berry on the plant.

We have grown Strawberries for thirty-two years and we believe Gibson to be the best variety we ever had.

For market you can't beat Gibson for it ships well, arriving at distant markets in prime condition. The handsome appearance of the fruit and its delicious taste cause it to pull the highest prices in any market. The plant is a strong grower and produces big crops. It is as near rustproof as a plant can be.

Mr. E. C. Nord, of Rice Lake, Wisconsin, in sending in a picture of his crop of Gibson, says: "The patch I planted with Gibson that I bought from you is the best that I ever had. Last year they yielded me a net profit of \$665 per acre and in a dry season at that. I had several Strawberry-growers inspect my patch and they pronounced it the finest they had ever seen. By looking at the accompanying picture you will note that my patch is located on the lake shore, and the first season I harvested the crop most of the other berries were hurt by the late frosts. My Gibsons were not affected at all."

While we have a larger acreage of Gibson than ever before, the national popularity of this grand variety makes a demand far in excess of the supply, so take our advice and order early and heavily of Gibson, for it will surely pay you big money on your investment.



Gibson

MID-SEASON VARIETIES—Con.—Price List Page 14.

Bubach No. 5.

Imp. One of the largest berries of the old varieties. It is popular in nearly all sections of the country. The plants are model growers, making just enough plants for nice fruiting row. Every year the demand for plants of this grand old variety is larger than the preceding one. They do not make plants very freely and for that reason they cannot be sold as cheaply as some other varieties. We have a good stock, but as the demand for them is always heavy, you should order early so as to be assured of getting them.

**HERITAGE.**—Per. The

plant is very large, of extremely heavy texture, some single-crown plants carrying foliage with a spread of 20 or 22 inches. Deep rooted and extremely free in fruiting, beginning to ripen its fruit about early midseason and continuing to very late. Another prominent feature is that the fruit-stems continue to shoot so late that during the early picking season there are many blossoms, which indicates to the experienced grower their long season of productiveness. The berry is dark, shiny, crimson to the center. Has a perfect blossom. Carries an unusually heavy green calyx, adding decidedly to its market value. Extremely large from the first picking to much above the average for the main crop and continuing large after the better known varieties are gone. We have fruited the Heritage for several seasons and every year grow more enthusiastic over it. Don't fail to include this one in your list, as it will prove a money-maker for you.

Glen Mary. Per. A strong, vigorous-growing, healthy plant. Some seasons it has pollen to fertilize itself, but it is better to plant it next some perfect-blooming variety, like Dunlap, Brandywine, or Gibson. The Glen Mary is fast growing in favor all over the country. The berry is so large and fine looking it always commands the highest price in market. It needs good

Heritage

soil, good culture, and plenty of room in the row.

Pocomoke. Per. From the standpoint of a commercial grower this comes very near being a perfect variety. It is a healthy, luxuriant grower, making plenty of runners, and is an abundant bearer of large, firm, bright red berries. Never misshapen and holds up in size better than a great many varieties. It is a superior berry in every way, with the exception of being a little tart; however, this makes it very popular as a canning berry. Needs no petting and will produce large crops under reasonably good culture. For some time we have noticed the similarity of the Pocomoke and Parson's Beauty and are now convinced that they are one and the same variety.

Be sure to include some Pocomoke plants in your order.

Rewastico. Per. The fruit of this variety is very firm in texture and will stand shipment to distant markets in splendid condition. Berries are large and regular in size, being a light cardinal red in color. It is of exceptionally good quality, being rich and tart, making it a splendid canning sort. It is a mid-season variety but stays in bearing a long time and holds its size well to the end. Our supply of plants is very limited this season.

EVERYONE DELIGHTED

Illinois, May 16, 1918

Dear Sirs:—Kindly send the enclosed order. Thank you for the nice stock sent previously. Everyone is delighted.

Yours very truly, M. C. McWILLIAMS

MID-SEASON VARIETIES—Con.—Price List Page 14.

Wm. Belt

Wm. Belt.

Per. The plant is very large, a most luxuriant grower and remarkably productive. It is medium in ripening, neither very early nor very late; size is very large indeed. In form it is conical, rather long and quite uniform in shape. The color is a brilliant, glossy red—as near perfection as was ever seen in a berry. It ripens all over without green tips. The quality is good—better than is usually found in large berries. The foliage of Wm. Belt, as grown here, is affected with

some rust and, to insure a good crop every year, it should be sprayed, and it should be planted on well-drained, warm soil.

Uncle Jim.

Per. A good grower of large, stocky plants, well spaced for fruiting. The fruit is large, highly colored, quite firm, and of good quality. A choice among the standards. The plant is very large, and the roots go deeper than any variety we have, which makes it well able to resist drought.

LATE VARIETIES.**Aroma.**

Per. One of the old standard varieties that, in certain sections, continues to be a favorite in spite of the many new varieties being introduced. It seems to be better adapted to the South and Southwest, although it has been grown very successfully here in Michigan. Fruit is very large, bright red in color to the center, and has a delicious flavor. It is productive and firm of texture, making it a great shipping berry. It has a long fruiting season and continues good until the end. The demand for this variety is usually far in excess of the supply.

berries, they should have plenty of room in the row, so they can build up strong stools.

GANDY.

Per. This is one of the most reliable, large late berries that is grown. It is one of the old standard varieties that you can depend upon. It is a strong grower and a good plant-maker. The large, handsome appearance of the fruit always commands for it a high price in market. The fruit always grows large and is one of the best shipping varieties known. In some localities the Gandy is not so productive as some varieties, but the fact that it ripens late and is of a hardy nature indicates that it will do well in any soil where other berries grow. You can't afford to be without Gandy, whether for home or market.

Brandywine.

Per. A vigorous, perfect-blooming plant; tall fruit-stalks; broad, heavy, dark green foliage. Plants productive, having four and five stalks heavily loaded with large to very large berries. Medium red, somewhat like Gandy, only a little more dull; large yellow seeds on surface. Flesh red clear through, firm, somewhat acid, but with sprightly flavor; ripens medium to quite late. Does best on heavy loam or heavy clay. Like all large

Sample.

Imp. A valuable, large, late variety. Sample has scored such a marked success in many places that no progressive grower can afford not to plant some of it. The successful man is he who tests all really promising varieties and in that way

LATE VARIETIES—Con.

quickly finds those suited to his own soil, climate, etc.

Michigan Horticultural Experiment Station says: "Sample has proven itself to be a very valuable sort. It is hardy and productive of choice, attractive berries. It has large, healthy foliage, and stout fruit stalks. With strong soil and good culture it is one of the most promising kinds for general purpose planting."

STEVENS' LATE CHAMPION. Per. This is one of the best late varieties grown.

It makes strong, vigorous plants which produce an abundance of fruit. The plants send out a great many runners that take root quickly and cover the ground if not restrained. The fruit and blossoms are well protected by the abundance of foliage. The fruit is large, long, and slightly flattened. The color is a deep red, the flesh being also red. It ripens all over and is very firm, being one of the best varieties to hold up after picking that we know. Its season of ripening is

about with that of the Gandy and is a worthy rival of that grand old variety as a popular and profitable late berry.

Teddy Roosevelt. Per. Several years ago a few plants of this variety were sent us from a grower in Indiana. We set them out and nearly forgot about them. But the following year one of our men, who is interested in all new varieties, took some of the plants and set them on his own farm. He kept setting the new plants every year until this year he has a good-sized patch of them. He reports to us that, out of about thirty varieties he is growing, Teddy Roosevelt, has proven superior to them all. The season of ripening is late. The fruit is large, dark red, and of excellent flavor. The plants are unusually strong and healthy and can be depended upon for a crop even when adverse weather conditions seriously affect other varieties. We have only a few of these plants to offer this year, so send your order in early to be sure of getting your supply.

Price List of Strawberry Plants.

We sell 250 of any one variety at thousand rate. 100 each of several varieties takes the hundred rate.

FALL BEARING.

| | | | |
|------------------|--------|--------|---------|
| | 25 | 100 | 1000 |
| Progressive..... | \$0.75 | \$2.00 | \$15.00 |
| Superb..... | .75 | 2.00 | 15.00 |

GENERAL LIST.

| | | | |
|-----------------------------|-----|------|------|
| Aroma..... | .35 | .90 | 6.00 |
| Bederwood..... | .35 | .70 | 4.50 |
| Brandywine..... | .35 | .80 | 5.50 |
| Bubach..... | .35 | 1.00 | 7.00 |
| Campbell's Early..... | .35 | 1.00 | 7.00 |
| Charles 1st..... | .35 | .90 | 6.00 |
| Gandy..... | .35 | .90 | 6.00 |
| Gibson..... | .35 | .80 | 5.00 |
| Glen Mary..... | .35 | 1.00 | 6.50 |
| Haverland..... | .35 | .80 | 5.00 |
| Heritage..... | .35 | .80 | 5.00 |
| Helen Davis..... | .35 | .80 | 5.00 |
| Pocomoke..... | .35 | .80 | 5.25 |
| Rewastico..... | .35 | 1.00 | 7.00 |
| Sample..... | .35 | .90 | 6.00 |
| Senator Dunlap..... | .35 | .80 | 5.00 |
| Steven's Late Champion..... | .35 | .90 | 6.00 |
| Teddy Roosevelt..... | .35 | .80 | 5.50 |
| Uncle Jim..... | .35 | 1.00 | 6.50 |
| Warfield..... | .35 | .80 | 5.00 |
| Wm. Belt..... | .35 | .80 | 5.50 |

Remember, we guarantee these plants to reach you in good live condition when sent by express or mail, and if not so, we will refill the order, but we must have proof of this promptly upon receipt of the plants.

Freight Shipments go at your own risk. Our liability ends when we deliver them to the freight station in good condition and receive bill of lading.



Black Pearl

RASPBERRIES.

Price List Page 20.

Either red or black Raspberries are a profitable crop wherever grown, and after being planted are not hard to care for. As with strawberries the same land that will produce good corn or potatoes will also grow good Raspberries and with just about the same amount of cultivating and hoeing that you would give corn and potatoes. Black Raspberries should be set from 3 to 3½ feet in the row and the rows 7 feet apart. As soon as growth starts and plants are from 18 to 20 inches high, pinch out the top of each cane, which causes them to send out laterals and gives a larger fruiting surface for the following year. Red Raspberries should be set 2 feet in the row, and the rows 6 to 8 feet apart. Do not pinch off the tips of these, but the rapid-growing kinds, such as Cuthbert, should be cut back somewhat in the spring. After the fruiting season of both reds and blacks, cut out the old wood, thus allowing the new stalks to make a good growth for the coming season.

BLACK RASPBERRIES.

BLACK PEARL. This variety originated near St. Joseph, Missouri, a few years ago and the fruit-growers in that section and the

Middle West generally have found it so profitable that they are planting more heavily of it than of all other varieties combined. One grower writes of it: "I have grown the Black Pearl Raspberry now for three years, and find it the best and earliest blackcap Raspberry grown in the Middle West. Earlier than Kansas and much more prolific than Cumberland." Another grower writes: "I have found them to be superior in many ways to the Cumberland and Kansas blackcap. They seem to be good drought-resisters and never winter-kill. The bushes will stand up under a big load of fruit and never tumble down like other varieties do." A great many plants are being sold for Black Pearl that are in no way related to that variety and all growers should be careful from whom they purchase their stock. There is absolutely no doubt as to the purity of the plants we offer for sale. If you want to grow Raspberries that will bring high market prices, or if you grow for your own table, you can't go wrong on Black Pearl. In our estimation and in the opinion of many noted growers Black Pearl will soon become the greatest of all Black Raspberries.

FINEST ROOTS EVER SEEN

Illinois, March 27, 1918

Dear Sirs:—Plants all O. K. They were very fine. They have the finest roots I have ever seen on any plants.

Yours truly,

G. W. FERNER



Cumberland

SCARFF. The introducer of this remarkable berry, Mr.

W. N. Scarff, of Ohio, writes us as follows: "We wish to call your attention briefly to a new blackcap Raspberry, which we purchased three years ago from a fruit-grower of our country. We have grown blackcap Raspberries for a quarter of a century, and have tried almost all of the new ones, and can truthfully state that this is by odds the best one we have ever grown or seen. We fully believe that all that is necessary to prove it the best all-round blackcap is to put it in test with other kinds and let it prove its own merits. We could offer dozens of local testimonials but we believe you have faith enough in us to believe what we say, and we could not afford to offer it as we do if we did not fully believe that it would outstrip any other kind. In size it compares with the Cumberland, possibly a little larger. In productiveness it is far ahead of any blackcap we grow. It is absolutely hardy. Canes free from disease and strong upright growers. The canes are cleaner by far than any Raspberry we have ever seen and we think it will stand heat and drought better."

Our stock was purchased direct from the introducer, so you can be assured of its purity. Frankly speaking, we consider this variety one of the finest of all Raspberries now on the market. You should include some Scarff in your next order.

Cumberland. This is the largest of all the old standard blackcaps and one of the very best. New ones come and go, but since the Cumberland was introduced several years ago, it has been forging steadily ahead, until at present we believe there are more Cumberland grown than any other two varieties. There is only one reason for this and that is that they are money-makers. They are healthy, vigorous growers, throwing up stout, stocky, well-branched canes that produce immense crops of magnificent berries. The fruit is large and firm, the quality is fine. Ripens in midseason and continues for two to three weeks. We have the finest crop of black Raspberry plants, particularly Cumberland, this year that we ever grew. If you want to be assured of a profitable patch, send to us for your supply of plants.

A LARGE NURSERY FIRM PLEASED

Dear Sirs:—On the whole we are very much pleased with your stock and service this spring, for which we thank you.

Yours truly,

Iowa, May 3, 1918
DES MOINES NURSERY CO.

✓ Gregg. For years Gregg has been the standard market berry all over the country, and in some sections it is the main crop. The fruit of Gregg is of the very best quality, good sized, and covered with bloom. It is one of the latest varieties in ripening and in sections where it still does well is very profitable to grow.

✓ Kansas. One of the best and most widely known early varieties. In some sections it is planted more extensively than any other sort. The canes are strong and healthy and produce large crops of fruit. Berries are jet-black, of good size, firm, sweet, and of best quality. Kansas has been a general favorite for several years and we have sold thousands of plants from which we hear of excellent results. No matter whether you grow for your own table or for market, Kansas should be in your garden. Include some in your order.



Plum Farmer

✓ Plum Farmer. Although this is one of the newer introductions in blackcaps, it has come rapidly to the front. In this section it is being planted very heavily for an early variety and our growers find it more profitable than any other sort. The berries are of large size and excellent quality. They are coal-black but covered with some bloom, which gives them a bluish gray appearance. The canes are strong growers, hardy, and produce a

very large crop of fruit which is matured quickly. Don't hesitate to plant freely of Plum Farmer, as you will find it exceedingly profitable. We have planted Plum Farmer quite extensively and find it all right in every respect. In fact it is an excellent variety for home use and market. If you want to sell your crop, Plum Farmer ripens before the markets have other varieties on sale. There is no question about its worth for it has proved it in many gardens.

DID NOT LOSE ONE PLANT

Michigan, Feb. 12, 1918.

Dear Sirs:—I am enclosing order for plants together with remittance for same. I only hope that this order is handled with the same care and consideration that you gave me last year. I did not lose one of your plants. Had I had as good luck with the plants I ordered from an eastern concern, I would not have had to order any this year. But one must live and learn and now that I have found you, I am not apt to forget you, nor miss a chance to give you a good endorsement to any of my friends.

With best wishes,

D. W. ENSIGN.

GIBSON THE ONLY BERRY

Ohio, Oct. 2, 1918.

Dear Sirs:—Enclosed please find order for plants. I also wish to put in my order for 1,500 Gibson strawberry plants for next spring. I had 2,500 Gibson four years ago from you and must say it is the only berry and best I have ever grown. I was so well pleased with my plants four years ago that I thought it would be best to order from you this year.

Yours truly,

MRS. H. KAHL

RED RASPBERRIES.—Price List Page 20.

Cuthbert

✓ **King.** Since its introduction several years ago, the King has been rapidly growing in public favor, until at the present time it takes the lead of all early varieties. Fruit is of good size and of a bright, beautiful color; it is firm and of exceptionally good quality. Immensely productive and commencing to ripen early, it always commands a good price in market. Making a selection from the old standards, our advice would be to plant King for early and Cuthbert for late, and you will always be assured of a profitable crop.

✓ **St. Regis** This variety is unusual from the fact that it produces fruit from early summer until late fall. It is the earliest Raspberry to ripen, coming with the last of Strawberries. The spring crop is the main crop but they continue, in smaller quantities of course, all during the summer and autumn. By the last of August the new growth of wood, which has been maturing during the summer, is ready to bear fruit and continues to do so until stopped by frosts. The fruit is of good size, a beautiful, bril-

liant crimson color, of delicious flavor, and firm enough to ship to distant markets. In our opinion St. Regis will never be grown as extensively as Cuthbert and King for commercial purposes but everyone, should have some of them in order to enjoy delicious red Raspberries on their tables all during the season.

CUTHBERT.

✓ This is one of the most valuable of the old standard varieties. It has been widely grown in all sections of the country and has given excellent results both for home use and commercial purposes. Cuthbert is a good, vigorous grower and produces bountifully large and beautiful bright red berries. Probably no other red Raspberry is grown so extensively as the Cuthbert and the demand for plants is always heavy. We grow them by the million every year in anticipation of the enormous demand, but even then we sometimes run out of them before the season is ended. Don't fail to get a supply of the Cuthbert for the main crop, for they are the very best late red that we have and no fruit-grower can afford to be without them.



King

PURPLE RASPBERRIES—Price List Page 20.

✓ **Columbian.** Purple Cap. This, in our opinion, is the best of the purple varieties. It is very hardy and produces large quantities of berries of enormous size, sometimes measuring one inch in diameter. The color is dark red, nearly purple. It shows

its relationship to the blacks by propagating its plants from the tips. We do not believe that any of the purple caps will ever be considered seriously as commercial berries, but for home use and home market they have proven very satisfactory.

BLACKBERRIES—Price List Page 20.

In planting your Blackberry patch, select land that is full of humus and retains moisture well, for this crop ripens at a time when we can naturally expect dry weather, and if your patch is on land that quickly dries out, the crop will suffer. Culture for Blackberries is the same as raspberries, only they need more room and should be set 3 to 4 feet apart in the row and the rows from 7 to 8 feet apart.

Eldorado.

Has been cultivated many years, and under careful test at different experiment stations has never winter-killed or failed to produce a full crop of the finest fruit. The vines are very vigorous and hardy, enduring the winters of the far Northwest without injury, and their yield is enormous. Berries are very large, jet-black, borne in large clusters, and ripen well together; are very sweet, melting, pleasing to the taste, and have no hard core; quality unpaired.



Eldorado

Mesereau.

✓ Originated in northwestern New York. Iron-clad in hardiness; has a combination of the desirable qualities of a good Blackberry; exceptionally sweet, rich, and melting, nearly without core. Canes very strong; upright grower, attaining a height of 7 to 8 feet. The yield is simply enormous, and affords heavy picking from the first until all the crop is matured. Season late.

✓ **Wilson's Early.** One of the largest and most productive of the early sorts. It is grown here largely for the market, as it pays better than any other variety. It always sells at a premium over other Blackberries in Chicago market and is daily

quoted higher. The berry is large, jet-black, and holds its color, never turning red. It is not hardy, and here in the North needs winter protection to insure crop. By taking pains to lay it down, as is done here, it can be grown anywhere in the North. In the South it will need no protection.

Price List of Raspberries and Blackberries.

We sell 250 of any one variety at thousand rate. Not less than 50 plants at the hundred rate. One hundred each of several different varieties still takes the hundred rate.

BLACK RASPBERRIES.

| | 25 | 100 | 1000 |
|--------------------|--------|--------|---------|
| ✓ Black Pearl..... | \$1.00 | \$2.00 | \$15.00 |
| ✓ Cumberland..... | .75 | 1.75 | 12.00 |
| ✓ Gregg..... | 1.00 | 2.00 | 15.00 |
| ✓ Kansas..... | .75 | 1.75 | 12.00 |
| ✓ Plum Farmer..... | .75 | 1.75 | 12.00 |
| ✓ Scarff..... | 1.00 | 2.00 | 15.00 |

RED RASPBERRIES.

| | | | |
|------------------|------|------|-------|
| ✓ Cuthbert..... | .75 | 1.75 | 12.00 |
| ✓ King..... | .75 | 1.75 | 12.00 |
| ✓ St. Regis..... | 1.00 | 2.00 | 18.00 |

PURPLE RASPBERRIES.

| | | | |
|------------------|------|------|-------|
| ✓ Columbian..... | 1.00 | 2.00 | 18.00 |
|------------------|------|------|-------|

BLACKBERRIES.

| | | | |
|-----------------------|------|------|-------|
| ✓ Eldorado..... | 1.00 | 2.00 | 15.00 |
| ✓ Mersereau..... | 1.00 | 2.00 | 15.00 |
| ✓ Wilson's Early..... | .75 | 1.75 | 12.00 |

NUMBER OF PLANTS REQUIRED TO SET ONE ACRE.

| | | | | |
|-----------------|--------|--|-----------------|-------|
| 2 x 2 feet..... | 10,890 | | 6 x 5 feet..... | 1,452 |
| 3 x 2 feet..... | 7,270 | | 6 x 6 feet..... | 1,210 |
| 3 x 3 feet..... | 4,840 | | 7 x 2 feet..... | 3,111 |
| 4 x 2 feet..... | 4,445 | | 7 x 3 feet..... | 2,074 |
| 4 x 3 feet..... | 3,630 | | 7 x 4 feet..... | 1,555 |
| 4 x 4 feet..... | 2,722 | | 7 x 5 feet..... | 1,244 |
| 5 x 2 feet..... | 4,365 | | 7 x 6 feet..... | 1,037 |
| 5 x 3 feet..... | 2,904 | | 7 x 7 feet..... | 888 |
| 5 x 4 feet..... | 2,178 | | 8 x 3 feet..... | 1,815 |
| 5 x 5 feet..... | 1,724 | | 8 x 4 feet..... | 1,361 |
| 6 x 2 feet..... | 3,630 | | 8 x 5 feet..... | 1,089 |
| 6 x 3 feet..... | 2,420 | | 8 x 6 feet..... | 905 |
| 6 x 4 feet..... | 1,815 | | | |

CURRENTS.

There should be at least a few Currant plants in every garden. The fruits make excellent jams and jellies, and the plants are hardy and easy to grow. Currants require a rich soil which retains moisture well. The plants should be set 3 to 4 feet apart and the rows 5 to 6 feet apart. Keep the patch well hoed, cultivated and trimmed.

PERFECTION. A variety that has created a big sensation for several years past. It was propagated by scientific principles from the Fay's Prolific and the White Grape, and so successfully was it crossed that it possesses most of the good qualities of both. It won the famous Patrick



Perfection

Barry Medal, the committee making the following report: "Season of ripening same as Cherry and Fay. Color bright red; a good grower. Size very large, larger than Fay and Cherry, clusters very long. Productive, resembling the White Grape in this respect. Quality fine. Not so acid as Fay and other red sorts. As a table Currant, cannot be surpassed. An important fact is that it has a long stem making it easy to pick." In addition to the Barry Gold Medal, the Perfection won the highest awards at the Pan-American Exposition and a gold medal at the St. Louis World's Fair. The call for the Perfection has been so great since its introduction that there have never been enough plants to supply the demand, and those who want some plants of this Currant we would advise to place their orders just as early as possible. \$1.50 per doz., \$10 per 100.

Fay's Prolific. Probably the most popular of all the older varieties of Currants. It is early, of a good color and size, and very productive. It does better on a heavy soil, and when given proper care can always be depended on for a crop that will sell at good prices. \$1.00 per doz., \$6.00 per 100.

Wilder. A remarkable variety, for which we predict great popularity, both for table and market. One of the strongest growers and most productive. Bunch and berries very large, bright attractive red color, even when dead ripe; hangs on bushes in fine condition for handling as late as any known variety. Compared with the celebrated Fays is equal in size, with longer bunch, better in quality, with much less acidity; ripens at same time, continues on bush much longer; fully as prolific, in some trials largely outyielding it. Recommended by our Experiment Station as the best red currant. Strong plants. \$1.00 per doz., \$6.00 per 100.

KENTUCKY CUSTOMER PLEASSED

Gentlemen:—The strawberry plants have been received in fine condition. I thank you for promptness. Enclosed please find an additional order. Kentucky, May 11, 1918

Yours respectfully,

G. E. FORSTON

PLANTS FINE

Dear Sirs:—Enclosed please find remittance for plants. They were fine and arrived in good condition. Michigan, May 11, 1918

Yours truly,

EM. DUTCHER



Downing

GOOSEBERRIES.

Excellent fruits for making jellies. The bushes are hardy and vigorous. Cultivate Gooseberries the same as Currants.

Downing. A very strong, vigorous grower. Healthy and free from mildew. It produces great quantities of large, pale green, tender-skinned berries of splendid quality. It is one of the oldest and most widely grown varieties and is excellent for family use and very profitable for market. Plant Downing for profit. \$2.00 per doz., \$10.00 per 100.

Houghton. The berries of Houghton are smaller than Downing, but it is a strong grower, free from mildew, and particularly healthy and hardy. You can nearly always depend on a full crop and it never fails entirely. The fruit is pale red; skin thin, and flavor sweet. A good all-round table and market berry. \$1.50 per doz., \$8.00 per 100.

GRAPES.

Considered from all standpoints, this is one of the most satisfactory crops that can be grown. Almost as sure as the seasons come and go you can depend upon a grape crop. Sometimes larger and sometimes smaller, but they can be classed as a dependable crop and the average amount that can be made per acre, year after year, is very satisfactory indeed. And then the harvesting of the fruit and the culture of the vineyard is not such exacting work as with some other fruits, for the picking season extends over a period of two or three weeks, and the pruning of the vines can be done in the late fall or at any time during the winter when there is a day suitable. No plot of ground is too small to have a few vines planted for table use, and it seems that they cannot be planted on too large a scale for commercial purposes. For instance, here at Sawyer and in the vicinity adjacent are located vineyards of The Lakeside Vineyard Company, comprising over 600 acres of grapes in full bearing. This is the largest vineyard under one management in this state.

Any good dry soil with sufficient drainage is suitable for growing Grapes, if the exposure and climate are favorable. Before planting, plow, harrow, and pulverize thoroughly down to a depth of 12 or 18 inches. Plant in rows 8 to 10 feet apart and the plants 10 to 12 feet in the rows. There are so many methods of pruning, different methods being adapted to different localities, that we will not dwell on that point, only to say that proper pruning is very essential to the successful growing of Grapes, and the method that is proving best in your locality is the one for you to follow.



Concord

Concord. Black. Decidedly the most popular Grape in America, and deservedly so. Bunch large, compact; berries large, covered with rich bloom; skin tender, but sufficiently firm to carry to distant markets; flesh juicy, sweet, pulpy, tender; vine a strong grower, very hardy, healthy and productive. For general cultivation the most reliable and profitable variety grown. 2-yr. plants, \$1.25 per doz., \$6 per 100, \$50 per 1,000.

NIAGARA. White. Occupies the same position among the white varieties as Concord among the black, the leading profitable market sort. Bunch and berries greenish white, changing to pale yellow when fully ripe. Skin thin but tough, quality much like Concord. Niagara will thrive and produce big crops almost anywhere. It does well in Michigan and south to the most southern states. Read what the experiment stations say about it:

"If restricted to one variety, for either home or market, would choose Niagara. Other sorts are better in some particulars, but taken as a whole, there is no other its equal. Good growers, productive enough,

always handsome in bunch and berry, of very good quality, with flavor one does not tire of. Will hang after ripening without rotting, cracking or wilting."—Illinois Experiment Station.

"Standard White Grape for home and market."—Georgia Experiment Station. 2-yr. plants, \$1.25 per doz., \$7 per 100, \$60 per 1,000.

Moore's Early. Very popular for early market. Moderate grower, healthy, and hardy; with good soil, high cultivation, and pruned long it is sufficiently productive. Larger than Concord; same color and flavor. 2-yr. plants, \$1.25 per doz., \$7 per 100, \$60.00 per 1,000.

Campbell Early. One of the strongest growers, and hardiest varieties. It ripens with Moore's Early; quality is good. Its long keeping and good shipping qualities are really marvelous and unequalled by any other variety, old or new, and it is and will be the most profitable to grow. An enthusiast says: "It is the best of all American Grapes." 2-yr. plants, \$1.50 per doz., \$10 per 100, \$85 per 1,000.



ASPARAGUS.

Asparagus will grow well in almost any soil except low, damp ground, but the land should be under good cultivation and free from weeds. Mark the rows off $4\frac{1}{2}$ feet apart, making the trenches in which the roots are to be set by plowing twice in the same furrow with a two-horse plow and then shoveling out the loose earth, making a trench about 10 inches deep with a smooth, flat surface. The plants are now placed in this trench at a distance of 12 to 18 inches apart, spreading the roots out flat. Then cover with 2 or 3 inches of soil, allowing the shoots to come up through, and get a foot or so in height before the trench is filled up level full. Or, if you wish, while you are hoeing during the summer to keep the weeds down, you can fill in the trench a little at a time until it is full. After the first good freeze, the tops will die down and should be cut off and burned, after which the bed should have a liberal covering of well-rotted manure, or, if you do not have that, in the spring you can apply some commercial fertilizer and harrow in well before growth starts.

We have only two varieties that are grown largely here for the Chicago market and they are reliable.

Conover's Colossal. This good old variety is known everywhere; is of large size, rapid growth, and of good quality. Large plants, \$1.25 per 100, \$8.00 per 1,000.

Palmetto. A valuable variety widely planted. It is larger than Conover, fully as early, and the flavor is excellent. Strong plants, \$1.25 per 100, \$8.00 per 1,000.

PLANTS PLEASE. ORDERS FOR NEIGHBOR

Missouri, May 6, 1918

Gentlemen:—Please send by the express the following order for my neighbor. Trusting he will receive his plants as promptly as I did mine and that they will be as fine as mine were, I am

Respectfully, E. G. BULL



See how much more attractive and valuable a home can be made by a simple planting of shrubbery

ORNAMENTALS FOR THE HOME GROUNDS.

Our customers of late years are becoming more prosperous. Berry-growers are making money, and one of the results of this is that hundreds of them want to improve their home surroundings. Every season we get letter after letter asking if we cannot supply some good flowering shrubs such as are best adapted for country homes. For that reason we have prepared the following list of Shrubs and Vines, all of which we know from personal experience to be hardy and particularly adapted to beautifying any grounds. We have excellent plants to fill orders, and the descriptions will tell you what each kind is like and what it is good for. There is no way in which a few dollars can be spent so satisfactorily and bring so much pleasure to yourself and your family as in beautifying the home and making it a more attractive place in which to live. And again, if you should ever wish to sell your property, it will attract buyers much more quickly and you will get a great deal more for it than your neighbor, for instance, who would not spend a small amount of time and money to make his home grounds attractive. We would like to see all of our customers order a good supply of these Shrubs and Vines this season, for we know from personal experience the pleasure and satisfaction there is in growing them.

Althea (Rose of Sharon). One of the most valuable of tall, hardy shrubs. Blooms from August to October, a season when but few shrubs are in blossom. Excellent for either hedge or specimen plants. Strong bush plants, assorted varieties, 50 cts. each.

Philadelphus (Mock Orange). Almost as fragrant as lilac. Literally covered with white flowers in little clusters. The bushes grow from 4 to 6 feet high. They are splendid in groups of a dozen or so, and for hedges. Strong bush plants, 50 cts. each.

"ONE GOOD TURN DESERVES ANOTHER"

Dear Sirs:—I received the plants in good condition and I think I would like to set a patch of raspberries, so please send me the following:

Yours truly,

MRS. ABBIE SITTLER



Spirea (Bridal Wreath.)

S. Vanhouttei (Bridal Wreath).

A large shrub which produces immense numbers of white flowers late in the spring. The leaves are deep green, branches arch outward and are 5 to 6 feet long. Plant half a dozen specimens close to the house. Strong bush plants, 50 cts. each.

Syringa Alba (White Lilac).

This is a form of common Lilac that produces all white blossoms and single where the other are sometimes double. Lilacs, both purple and white, make excellent hedges or specimen plants and will grow to a height of 8 to 10 feet in good soil. Strong bush plants, 50 cts. each.

S. Vulgaris (Old-fashioned Purple Lilac). Everyone

knows what a lilac is, but not enough people have them in their yards. Their

good points are extreme hardiness, very early blooming, and wonderful fragrance. Strong bush plants, 50 cts. each.

V. Plicatum (White Double-flowering Snowball).

A perfectly hardy shrub, with immense globular flowers borne in clusters. Very showy and handsome. You probably all know this, as it is an old-time favorite. Grows 6 to 8 feet high. Plant several bushes singly. Strong bushes, 50 cts. each.

Weigela, The finest Weigela

Eva Rathke. grown. It is remarkably free-blooming and flowers con-

tinually throughout the summer and autumn. Blossoms are trumpet-shaped, of a beautiful ruby-carmine. For foundation or specimen planting there is nothing better. Strong bush plants, 75 cts. each.

PLANTS PLEASE MINNESOTA CUSTOMER

Minnesota, April 30, 1918

Dear Sirs:—The 1,500 strawberry plants I ordered from you came through their long journey in good shape. Please send me the following:

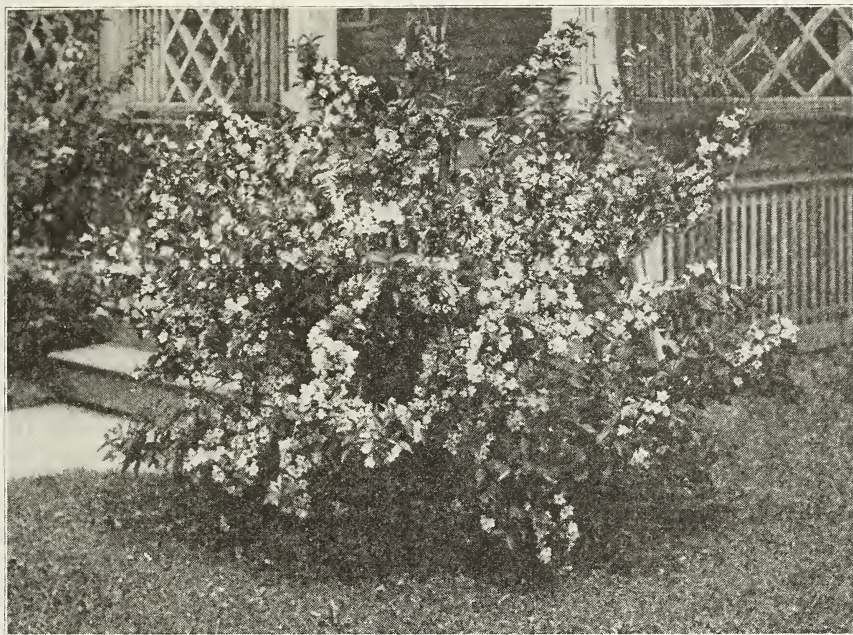
Yours truly, E. L. GAGE

EVERY PLANT SURE TO GROW

Colorado, April 18, 1918

Gentlemen:—I need some more everbearing strawberry plants. Please send the following: I never saw any finer roots than in those sent me. Every plant will be sure to grow.

Sincerely yours, W. C. BRADBURY



Weigela, Eva Rathke

VINES.

On the home grounds Vines are always useful. They give to the house a touch of beauty and mellowness, making it blend with the landscape as Mother Nature originally intended. Use them to cover up stones, stumps and the walls of the house. Plant them on the sunny side of the porch, where they can make it more beautiful and keep off the heat of the sun's rays.

Vines are fond of good soil, but they will grow well in any ordinary garden loam. In the following list we present the varieties that we know will give good results.

Japan Honeysuckle. A nearly evergreen vine of good growth and with yellowish white flowers. Deliciously fragrant. Strong 2-yr. plants, 35 cts. each.

Matrimony Vine. A very ornamental climber, which is capable of adapting itself to any condition. It makes a strong growth and produces small purplish flowers in summer, followed by a large crop of scarlet berries. Strong 2-yr. plants, 35 cts. each.

Boston Ivy. The old, reliable climbing vine of the North.

It has glossy leaves overlapping each other, and its long shoots stretch up the walls with such a rapid growth that they reach the roof in a short time. In planting Boston Ivy the plants, if still in a dormant condition, should be cut back to within 6 inches of the ground. Strong 2-yr. plants, 35 cts. each.

See Our Special Premium Offer for Early Orders on Page Four of Cover.

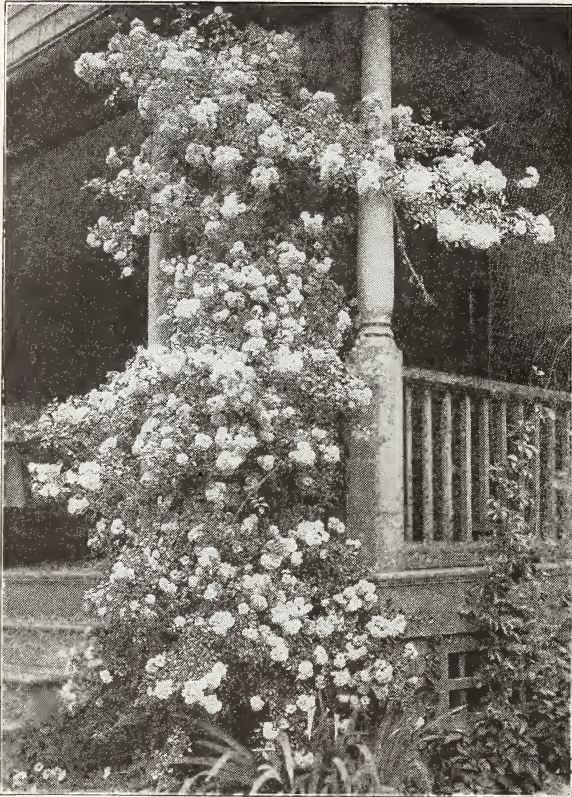
KNIGHT'S PLANTS BEST

Indiana, April 30, 1918

Dear Sirs:—Enclosed please find order for plants. The plants, most of them will be for re-setting. I have lost many plants but not many from your shipment. Your plants are A No. 1 and that is the reason I order them for re-setting.

Yours truly,

EDGAR G. HODSON



Dorothy Perkins

son Rambler has a plan all its own. It is a vigorous grower. The flowers are small, pink-crimson, and bloom abundantly in large clusters. Strong 2-yr. plants, 50 cts. each.

HEDGES.

Many of us do not fully know how much beauty and value a Hedge will add to the home grounds. For planting about the house a Hedge is just as effective as a fence and far more beautiful. Lots of people still cling to that fence between their grounds and their neighbor's. A Hedge of Privet or Barberry would greatly improve the looks of both places, at the same time giving an air of privacy to both. Talk it over with your neighbor, if he has anything to say about it, and decide to plant a Hedge this year.

California Privet (*Ligustrum ovalifolium*.)

This is easily the most popular of all ornamental Hedge plants, and more of it is used than all others combined. Its foliage, which remains on the plant nearly all winter, is a rich, dark green. It is a strong grower and will succeed, even under the dense shade of trees, where other plants would not exist. Plants should be set from 10 to 12 inches apart in the row and pruned back severely the first two seasons. Strong plants, 2 to 3 feet, 15 cts. each, \$10 per 100.

Thunberg's Barberry (*Berberis Thunbergii*.)

For a low Hedge and for planting around foundations in front of larger shrubbery, nothing equals this beautiful Barberry. It is of spreading habit, growing very thick right from the base, and requires but little trimming. The leaves are small, light green, turning to brilliant colors toward fall. It is absolutely hardy in all parts of the country, and should not be left out of your shrubbery list. Strong plants, 12 to 18 inches, 25 cts. each, \$2.50 per doz., \$20 per 100.

CLIMBING ROSES.

This class is one of the hardiest and most valuable of all Roses. They thrive in the cold winters of the North and revel in the hot summers of the South. For porch decorations they are effective and they protect from the hot rays of the sun and make the porch more pleasant.

We list below two climbing Roses which are hardy and bloom profusely.

Dorothy Perkins.

It is safe to say that this is one of the most valuable of all climbing Roses. It is a strong, vigorous grower and cares not where it is planted—in New Orleans or Detroit—so wide is its range. The canes grow rapidly, sometimes reaching 20 feet in a single summer. Foliage is bright, lustrous green and remains on the plant until winter. The flowers are delicate shell-pink and are borne profusely in large clusters. A few plants of this variety will make your home grounds more beautiful next summer. Strong 2-yr. plants, 50 cts. each.

Crimson Rambler.

This is another excellent Rose for home-ground decoration and it is especially valuable for trellis and walls. To give good results it should have lattice-work to support its canes. For walks and hedges Crim-

son Rambler has a plan all its own. It is a vigorous grower. The flowers are small, pink-crimson, and bloom abundantly in large clusters. Strong 2-yr. plants, 50 cts. each.

White Wyandotte

"THE HEN FOR PROFIT"

IT will pay you to improve your flock of chickens by getting some of our White Wyandotte eggs. We make a specialty of the White Wyandotte, which are of the Dustin Strain, acknowledged as being the best strain of layers known.

We have grown nothing else but White Wyandottes for the past six years and are justly proud of our beautiful flock. You can have just as good a one.

Chicken feed of all kinds having been so very scarce and high for the past year, many farmers have reduced their flocks by half while others have shipped all of their fowls to market. The effect of this will be shown in a very short time by unusually high prices for eggs and poultry. We believe the man who lays his plans to get a good big flock hatched out this spring will be substantially repaid for his foresight, and remember, **THERE ARE NO BETTER FOWLS GROWN FOR EGG PRODUCTION OR FOR MARKET THAN THE WHITE WYANDOTTE.**

Price of Eggs, \$2.00 for 15. \$7.50 per 100.

SPECIAL PREMIUM OFFER

For every order of \$3.00 or more, at catalog price, accompanied by cash and reaching us by March 15th, we will send you a setting of White Wyandotte eggs at half price, \$1.00. If you wish this premium, kindly notify us when ordering.

BUSY BEE HENNERY

VALENTINE PETZOLD, Prop.

BRIDGMAN, MICH.

Breeder of

Rose Comb Reds Single Comb White Leghorns Golden and Silver Seabright Bantams

ROSE COMB REDS. Our heavy laying strain of Rose Comb Reds have been bred for years for egg production and show purposes. They have won the coveted BLUE RIBBON in many shows. We will sell hatchings of eggs this year from two pens only as we have cut down our flock and have kept only the very best.

Pen No. 1, per 15 eggs.....\$3.00
Pen No. 2, per 15 eggs..... 2.00

SINGLE COMB WHITE LEGHORNS. These are the very best strain in the country. They are tested layers and of fine type—snow white underneath. The hens are mated to cock-birds, only, that have proven fertility, strength and vigor in their offspring. No. 1, pen-5 hens and a beautiful cock-bird,

Per 15 eggs.....\$3.00

No. 2, pen-10 fine one and two year old hens and a fine 3 year male bird, winning the BLUE RIBBON at South Bend, Ind.

Per 15 eggs.....\$2.00

SINGLE COMB WHITE LEGHORNS. We have a fine flock of Leghorns mated to two fine cock-birds, both winning second and third prize at South Bend, Ind. Stock carefully culled.

Per 100 eggs.....\$10.00
Per 15 eggs..... 2.00

GOLDEN SEABRIGHT BANTAMS. Our Golden Seabright Bantams are bred for ornamental purposes. They are easy keepers and good layers of nice sized snow white eggs. They can be kept in a small place and will more than pay for themselves in egg production. Our birds have been pronounced by the judges "Excellent."

Per 15 eggs.....\$2.00

We have also a dainty flock of Buff Cochins Bantams. They are beauties and can be kept in any place for they are very tame and do not fly.

Per 15 eggs.....\$1.50

SOME STOCK OF ALL OF THE ABOVE FOR SALE

WE GUARANTEE FERTILITY, and also that you will be greatly pleased with all stock received from us. We have many satisfied customers who can vouch for our honesty and fairness in all of our transactions. When writing be sure to mention that you saw this advertisement in Knight's Catalog.

VALENTINE PETZOLD, Box 100, Bridgman, Mich.

The "Kant-Klog" Sprayer



A few seconds working of the air pump charges the sprayer with compressed air, a powerful and elastic force, which discharges the liquid in the form of either fine sprays or solid streams as desired.

Sprays Trees, all kinds of Small Fruits, and Garden Vegetables, Disinfectants, Whitewash and many other uses.

Description

The Sprayer body is made of heavy polished brass or galvanized steel as desired. Both top and bottom are dome shaped; joined to body under heavy pressure, making a complete double seam. When completed this body is thoroughly tested at double the pressure ordinarily used, the result being that not one in a thousand give any of the troubles common with other constructions.

Hose is high grade, couplings solid brass with standard cut threads. Air pump of two inch heavy brass tubing. Fitted with "Kant-Klog" nozzle for making two round and one flat spray, two solid streams, spring hose cock, carrier strap and safety valve.

| | |
|---|--------|
| Price of Galvanized steel and above fittings..... | \$6.25 |
| Price of Brass body and above fittings..... | 9.60 |
| Brass pipe for tree spraying, 3 feet..... | .60 |

No. 4 and No. 8

For orchard or field spraying. Can be mounted on either the end or side of an ordinary barrel, pot or on a tank.

Outfits of this pattern put out ten years ago are still in active use, with never a penny's expense for repairs except replacing the hose. We say frankly and honestly that we do not believe there was ever a pump on the market as free from breakage and repair troubles.

This pump has large air chamber and possesses great power and force. The churn dash agitator attached to piston thoroughly mixes the solution at every stroke of the pump handle.

We do not furnish barrels, as suitable ones on which pump is easily mounted can be secured in all localities.

At prices quoted below, each pump is fitted with five feet of hose, five feet of iron extension pipe and one "Kant-Klog" nozzle, making a splendid outfit, fully guaranteed, at a very low cost.

No. 4, price, with seamless brass cylinder two and one-half inches in diameter, seven inches long, brass piston rod and brass screw spout\$13.75

No. 8, the same as No. 4, with all brass plunger, brass valve and valve seat.....\$16.80



No. 4 and No. 8



Golden Glow

A well-known popular plant. A strong, robust grower, attaining a height of 5 to 6 feet, and produces masses of double golden yellow cactus, Dahlia-like flowers, from July to September.



Boltonia

One of the showiest of our native, hardy perennials. Grows from 4 to 6 feet high, with daisy-like flowers in countless thousands, from July to September.

Special Premium Offer for Early Orders

For every Five Dollar Order of Plants at Catalog Price, accompanied by cash and reaching us by March 15th, we will send you the following FREE:

3 Plants of Golden Glow
3 Plants of Boltonia

Signify your wish for these plants when ordering

DAVID KNIGHT & SON
SAWYER :: MICHIGAN